

37° FLARE TUBE FITTINGS

T A P E R E D P I P E T H R E A D

37° FLARE TUBE FITTINGS

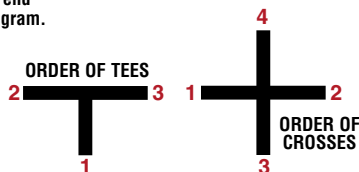
LENZ SPECIAL SHAPES

The Lenz Special Shapes shown are available in standard or special sizes. Only items priced in current supplementary price list are carried in stock. Price and delivery on non-stocked items furnished on request and will depend on quantity ordered. No quantity is too small for us to handle. We invite your inquiries. See pages 47 and 48 for information on fitting outlets. *To Order Stainless Steel, Add SS to Part No.*

How To Order Crosses - Indicate part number followed by the tube end size First then the other ends in the order in the diagram.

How To Order Tees - Indicate part number, specify size of tube end First, opposite end Second and side outlet Third. See diagram.

If there are two tube outlets, specify largest size First. If both female and male outlet on the run, show female size First. This would apply to our 3865 tees. Send pencil sketch if you prefer.



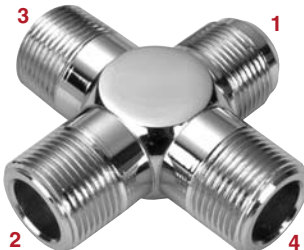
3765 Cross
Flare Tube End-
Flare Tube End-
Male Pipe End-
Male Pipe End



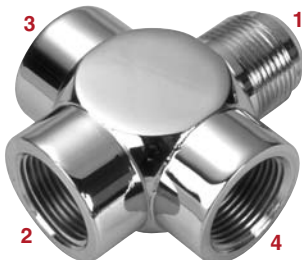
3775 Cross
Flare Tube End-
Flare Tube End-
Female Pipe End-
Female Pipe End



3785 Cross
Flare Tube End-
Male Pipe End-
Male Pipe End-
Male Pipe End



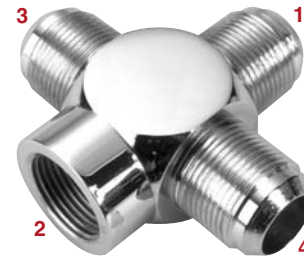
3795 Cross
Flare Tube End-
Female Pipe End-
Female Pipe End-
Female Pipe End



3815 Male Cross
Flare Tube End-
Flare Tube End-
Flare Tube End-
Male Pipe End



3825 Female Cross
Flare Tube End-
Flare Tube End-
Flare Tube End-
Female Pipe End



3865 Tee
Female Pipe End-
Male Pipe End-
Flare Tube Side Outlet



3875 Tee
Male Pipe End-
Male Pipe End-
Flare Tube Side Outlet



3885 Tee
Flare Tube End-
Female Pipe End-
Male Pipe Side Outlet



3895 • Tee
Flare Tube End-
Male Pipe End-
Male Pipe Side Outlet



3915 Tee
Flare Tube End-
Male Pipe End-
Female Pipe Side Outlet



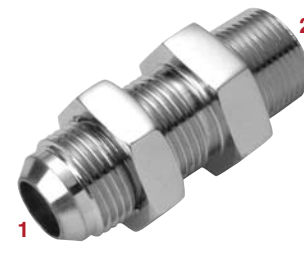
3925 Tee
Female Pipe End-
Female Pipe End-
Flare Tube Side Outlet



3935 Tee
Flare Tube End-
Female Pipe End-
Female Pipe Side Outlet



3995 Male Bulkhead
Flare Tube End-
Male Pipe End



Maximum Bulkhead
Thickness 3/8"

Note: Only items in current supplementary price list are carried in stock. Price and delivery of non-stock items furnished on request and will depend on quantity ordered.

LENZ • P.O. BOX 1044 • DAYTON, OHIO 45401-1044 • PHONE: 937/277-9364 • FAX: 937/277-6516
OFFICE & FACTORY • 3301 KLEPINGER ROAD • DAYTON, OHIO 45406-1842
INTERNET: <http://www.lenzinc.com>